

**BONDWAY**  
since 2006

# Biopsy Needle Guide for Ultrasound transducer

- \*Integral design without any accessories
- \*High grade medical stainless steel
- \*Artificial polishing
- \*Supporting accurate and angle adjustment biopsy
- \*Matching a wide range of needle gauges
- \*Simple pressing and quick release

CE 0123

Including but not limited to the following brands (over 600 types available)



**mindray**

**TOSHIBA**

**Canon**

**@saote**

**SIEMENS**

**SonoScape**

**PHILIPS**

**HITACHI**  
Inspire the Next  
**ALOKA**  
Illuminate the change

**SIUI**

**SAMSUNG**  
SAMSUNG MEDISON

**bk**  
medical

**ALPINION**  
MEDICAL SYSTEMS  
爱飞纽医疗

**SonoSite**

**VINNO**  
vision in innovation

**FUKUDA DENSHI**

**KONICA MINOLTA**

**SUPERSONIC**  
Live. Life. Easy.

**Neusoft**  
Beyond Technology™

**ECM**  
IMV Technologies Group

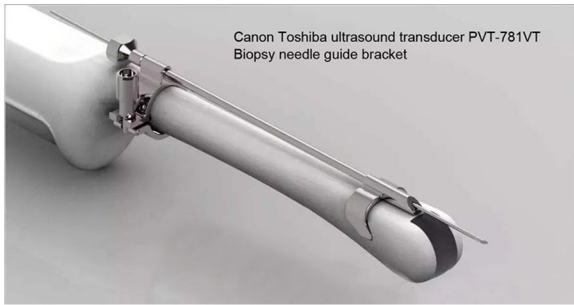
**ULTRASONIX**

**ZONARE**

**terason**

**ezone**

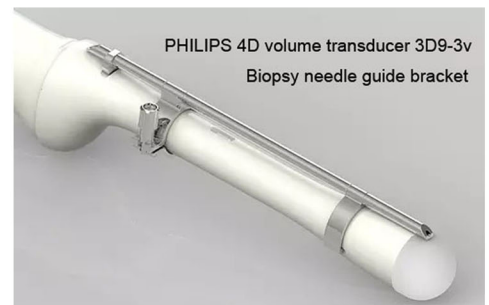
## Biopsy needle bracket attached onto transducers



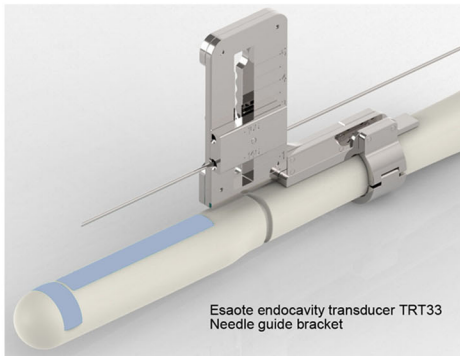
For Canon/Toshiba PVT-781VT



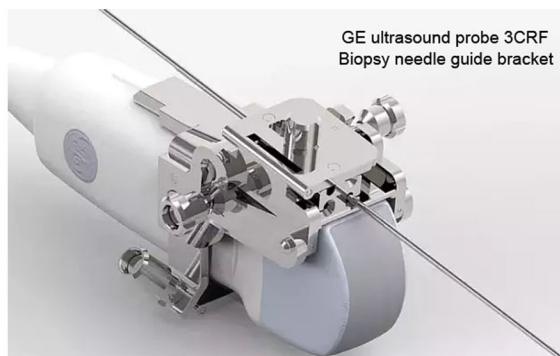
For Philips X6-1



For Philips 3D9-3v



For Esaote TRT33



For GE 3CRF



For Esaote CA541



For Hitachi Aloka UST-9133



For Hitachi Aloka UST-984-5



For Siemens 4V1

## Product Features

- 1. Corrosion resistance:** made of medical stainless steel, with much stronger corrosion resistant and rust-proof than any ordinary steel, suitable for various high-temperature & high-pressure sterilization methods.
- 2. High safety:** with a unique angle-locking positioning hole to ensure the puncture direction in the long axis of the ultrasound image exactly match puncture guideline, and the short axis of the image also undergoes rigorous accuracy tests to fully ensure the safety of puncture.
- 3. Easy to use:** with unique wing-shaped handle, you can easily separate the needle from the bracket; with a clamping structure for any type of needles, you can carry out puncture operation with Needle 14-22G easily
- 4. High reliability:** Integral design, without any small components, connecting parts tightly welded to eliminate the risk of missing small components; joints and connections reinforced to avoid any possible breakage.
- 5. High stability and high accuracy:** Well matching with the probe housing for a tight connection, no deformation and high-accuracy operation ensured after a long-term use.
- 6. Superb glossy appearance:** surface treatment purely by hand, smooth edge and corner for a safer and more comfortable use; simple and compact design to prevent any dust and dirt.

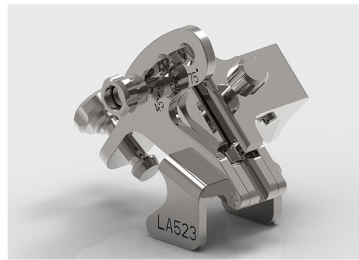
Over 600 types of biopsy needle bracket available for you to choose from



For Esaote EC123 EC1123



For Esaote AC2541



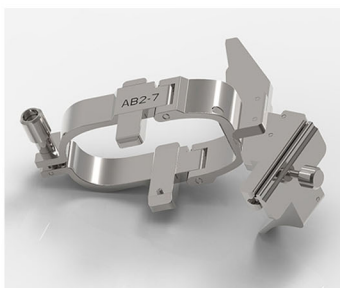
For Esaote LA523



For BK 8823



For GE E7C-RC



For GE AB2-7



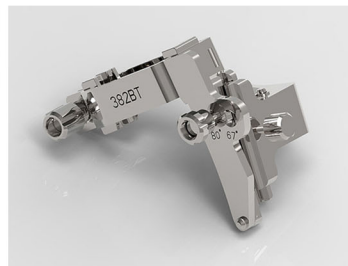
For GE BE9C



For Mindray 35C50EA



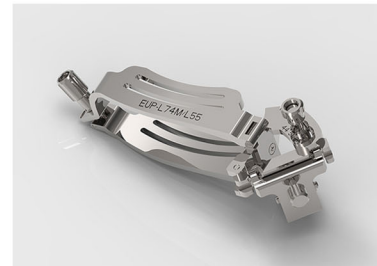
For Canon Toshiba PLT-1024BT



For Canon Toshiba PVT-382BT



For Canon Toshiba PVT-681VT



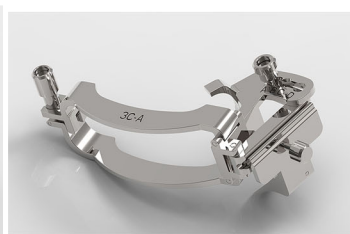
For Hitachi Aloka EUP-L74M /L55



For ECM E610A



For Ultrasonix C5-2



For Sonoscape 3C4



For Terason 5C2-A

**Bondway**, an ISO certified manufacturer, established on **July 11, 2006**, is dedicated to design and manufacture quality **ultrasound machines, digital color Doppler ultrasound system, biopsy needle bracket for ultrasound transducer, multiparameter patient monitor, etc.** We're proud that we've exported them to **over 130 countries** till now including Europe, Australia, North America, South America, Southeast Asia, Middle East, Africa, etc.

**REMARK:** We'll update the product list periodically, please contact us if you cannot find the item number of biopsy needle guide for your ultrasound transducers.